



novelties | 2026



Be Unique

MO2275

MO2861

More than Gifts 2026

Unique gifts for effective brand recognition

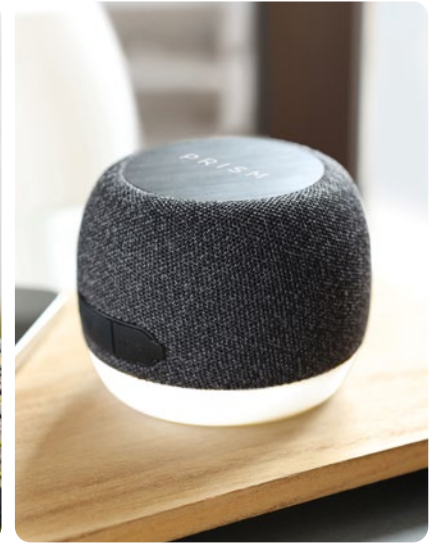
Mindful branded promotions

Explore a world of new products, smart solutions, creative ideas, and flexible printing options - all designed to help your brand stand out. As the demand for recycling and reuse continues to grow, we are proud to play an active role in the transition to a circular economy. We continually reassess our materials, products, and services to ensure they align with sustainable and responsible practices. More than Gifts features practical, everyday items that leave a lasting impression.

The pictures of the items reproduced in our catalogue are not contractual. We reserve the right to change without notice the product and packaging specifications or colours of any item mentioned in this catalogue.

amfori 
Trade with purpose

Environmental, Social & Governance



Planet

Sustainable solutions

Committed to reducing environmental impact by enhancing raw materials, optimizing packaging, and partnering with suppliers to minimize their footprint. Our state-of-the-art print facility recycles inks for cleaner production, while impact data empowers all to make transparent and sustainable choices.

People

Championing traceability

Sustainability guides every step of our journey, from sourcing and production to logistics. We hold ourselves accountable across the entire supply chain and continually push boundaries to stay ahead of legislation, inspire progress, and lead meaningful change.

Promoter

Social responsibility

The More than Gifts collection is built on well-being, inclusion, health, and safety. Through risk assessments, community initiatives, and active stakeholder dialogue, we foster social responsibility — creating positive, lasting impact for everyone involved.

Change

Creating awareness

By sharing knowledge and creating communication that sparks action, we are leading the movement towards a more sustainable industry. Our partnerships and educational initiatives empower collaboration, inspire innovation, and motivate lasting change for a better future.

Technology & Accessories



1. MO6657 / 2. MO2737 / 3. MO2442





Recar bamboo MO2801

Wireless 5.1 speaker with bamboo casing and ABS base. Features 3W mono sound. Includes rechargeable and replaceable 500mAh battery. Compact and modern design. **Size** 5.9X5.9X4.9CM **Print technique** Round screen printing*, RLL, P, D01



Recar MO2800

Wireless 5.1 speaker with metal body and rubber finish. Features 3W mono sound. Includes rechargeable and replaceable 500mAh battery. Compact and modern design. **Size** 5.9X5.9X4.9CM **Print technique** Round screen printing*, RLL, P, D01



Rapid MO2947

Compact digital camera with LCD monitor. Single Lens with F2.4 lens, 2.0" LCD, photo resolution up to 12MP and FHD video. Includes USB-C cable and built-in 300mAh battery. SD card not included **Size** 8.8X6.0X3.2CM **Print technique** Pad printing*, DL, D01



Mukava MO2777

Aluminium electric hand warmer with 3 heat levels (45°C, 50°C, 55°C) and built-in 5000mAh power bank. Dual-sided heating, Type-C input/output, USB-A and DC5V/2A output and charging cable included. **Size** 10X5.9X2.3CM **Print technique** Pad printing*, L



Findmy MO2759

Smart Apple Find My / Google Find Hub locator device with strap and IPX5 waterproof rating. **Size** 32X32X8MM **Print technique** Pad printing*



Voima MO2943

20,000 mAh power bank made of recycled aluminium with a digital power display and silicone hanger. Features two Type-C and two USB-A outputs with PD 65W fast charging. **Size** 93X50X50CM **Print technique** Pad printing*, L, PD



New colour

Powerflat 10c MO6770



Power bank 10000 mAh in recycled aluminium. Capacity for smartphone use, output current DC5V/1A and DC5V/2A. Includes indicating light and USB cable with micro usb plug. Supports quick charging technology (18W). In/Output: Type-C. Power delivery (PD) support to charge the newest laptop MacPro®. **Size** 14.2X6.6X1.6CM **Print technique** Pad printing,L,PD



New colour

Powerflat c MO6825



Power bank 4000 mAh capacity in recycled aluminium. Output current DC5V/2A. Includes indicating light and USB cable with Type C. In/Output: Type-C. **Size** 6.8X11X1CM **Print technique** Pad printing*,PD,L



Powermag MO2957



10000mAh power bank in recycled aluminium with indicator light. Features 15W magnetic wireless charging and 20W PD wired charging for fast and efficient power delivery. **Size** 103.5X67X15.8CM **Print technique** Pad printing*,DL,D01,L,PD



New colour

Pawtt MO2442



Magnetic wireless charger (15W) in recycled aluminium and power bank (5000 mAh). Output: DC 9V/1.66A. Supports quick charging technology (20W). In/Output: Type-C. Power delivery (PD) support to charge the newest laptop MacPro®. In/Output: Type-C. **Size** 6.7X10.2X0.95CM **Print technique** Pad printing*,DL,D01,L,PD



Powerkau MO2967

5000 mAh power bank in ABS case with phone stand functionality. Features Type-C input/output and 20W PD fast charging. Compact design for convenient travel use. **Size** 2.7X4.3X7.88CM **Print technique** Pad printing*,DL,D01



Braid MO2778



Tangle-free braided magnetic cable made from GRS-certified RPET and aluminium. Type C to C, 60W fast charging, 1 m length. Always stacks neatly and never ties in a knot. **Size** 28X35X32CM **Print technique** Pad printing*,L



New colour

Orio MO2145



3 in 1 foldable charging station in ABS. It has 3 wireless charging spots (15W). Input: 2-in-1 Type-C and Type-A. **Size** 25X7.5X0.8CM **Print technique** Pad printing*,DL



Rois MO2891



Magnetic charging station in ABS. 3 wireless charging spots. 1 x 15W, 1 x 5W for TWS and 1 Apple Watch charger (3W). 2 Type-C & 2 USB-A HUBS. Integrated cable input: connector from Type-C to USB-A. **Size** 65X260X8.6MM **Print technique** Pad printing*,DL



Linea 100 MO2924



100W retractable charging and data cable. Includes phone holder functionality. PVC cable with ABS case for power and data transfer (480Mbps). Type-C to Type-C connection. **Size** 6.4X6.4X1.4CM **Print technique** Pad printing*,DL,D01,PD



Cabstra MO2921



Cable set in wheat straw/ABS case with bamboo top and carabiner. Lid serves as phone stand (in horizontal position). Cable input 2in1 USB-C/A, output Type-C and 2 in 1 pin. **Size** 6.4X3.4X6CM **Print technique** Pad printing*,L,DL,D01



Karta MO2774

Magnetic PU leather credit card holder (for 3 cards). It includes an additional metal ring. **Size** 6.5X9.5X0.8CM **Print technique** Pad printing*,S



Karta stand MO2983

Magnetic PU leather credit card holder (for 3 cards) with stand functionality. It includes an additional metal ring. **Size** 6.5X9.5X1CM **Print technique** Pad printing*,S

Office & Writing



1. MO2885 / 2. MO9966 / 3. MO2830





Cordi note MO2861



A5 notebook with hard RPET polyester corduroy cover and 192 lined recycled paper pages (70 gr/m²). Casebound design with elastic band closure, pen loop, ribbon page marker, and washed kraft paper tag. **Size** 210X145CM **Print technique** Pad printing*,L,T,I,TD,TR,B



New colour

Arconot plain AR1804



A5 notebook with hard PU cover. Casebound. 192 plain recycled paper pages (96 sheets). Matching elastic closure strap and ribbon page-marker. FSC®-certified | FSC MIX CREDIT, P71, FSC-C213206 **Size** 21X14X1.6CM **Print technique** Pad printing*,S,T1,B,TR,PD



New colour

Arconot lined MO1804



A5 notebook with hard PU cover. Casebound. 192 lined recycled paper pages (96 sheets). Matching elastic closure strap and ribbon page-marker. FSC®-certified | FSC MIX CREDIT, P71, FSC-C213206 **Size** 21X14X1.6CM **Print technique** Pad printing*,S,T1,B,TR,PD



New colour

Note rpert MO9966



A5 notebook with hard 600D RPET cover. Casebound. 160 lined recycled paper pages (80 sheets). Matching elastic closure strap and ribbon bookmark. FSC®-certified | FSC MIX CREDIT, P71, FSC-C213206 **Size** 21X14X1.3CM **Print technique** Screen printing*,T1,TD,TR



Kit MO2889



Water repellent notepad in PP cover with pen. Twin-wire. Mineral paper 120 gr/m², 50 sheets lined. Blue ink. Elastic closure strap and pen holder. **Size** NOTEBOOK 12.7X8CM. BALLPEN14X1CM **Print technique** Round screen printing*,P,DL,D01



Engage MO2930



A5 notebook, recycled aluminium ballpen, and 350 ml double wall recycled stainless steel tumbler with PP sip lid and strap in gift box. **Size** 30.4X24.6X10.5CM **Print technique** Pad Printing*,S,RL,RD,RS,T1,TR,B,L





Ruler20 MO2917

Pine wood ruler 20cm with centimetre scale on one side and inch scale on the other.
Size 21X2.5X0.3CM **Print technique** Laser engraving*



Ruler30 MO2918

Pine wood ruler 30cm with centimetre scale on one side and inch scale on the other.
Size 31X2.5X0.3CM **Print technique** Laser engraving*



Jucoset MO2916

Stationery set in jute and cotton pouch including wooden 15cm ruler, wooden pencil, paper barrel ballpen, eraser and wooden sharpener. Natural look and reusable pouch.
Size 20X9X0.7CM **Print technique** Screen printing*,T,TD,TR



Asida MO2993

Wildflower seed business card. Size: 55 x 85 mm. Made in EU. **Size** 8,5X5,5CM **Print technique** Pad printing*,PD



Memoring MO2823

Memo pad in PP with sticky notes and 5 assorted colour page markers in recycled paper. Ring binder. **Size** 33X35X30,5CM **Print technique** Pad printing*,DL



High4 MO2812

Set of 4 highlighters in a kraft box. **Size** 7X7X1,8CM **Print technique** Pad printing*,PD,DL



Aluba MO2806



Twist ballpen with recycled aluminium barrel, recycled ABS twist part, and metal clip with bamboo detail. Blue ink. **Size** 14X1.2CM **Print technique** Round screen printing*,L,P



Siparo MO2798



Recycled aluminium stylus push ball pen. Blue ink. **Size** 14X1CM **Print technique** Pad printing*,L



Escrì MO2799



Push-type pen made of recycled aluminium with iron clip and colour rubberised barrel. Blue ink. **Size** 13.5X1.0CM **Print technique** Pad printing*,L



New colour

Penever MO2354



Long lasting recycled aluminium inkless pen. The pen writes with the graphite tip that has a plastic protection cover. **Size** Ø0.8X15.1CM **Print technique** Pad printing*,L



New colour

Pecas MO9614



Push button ball pen in wheat straw 50% and ABS 50% material (blue ink). **Size** Ø1X14CM **Print technique** Round screen printing*,P



Ampla MO2830



Ball pen in recycled ABS. Blue ink. **Size** 13.9X1.3X1.0CM **Print technique** Round screen printing*,P,PD





Study MO2783



Zippered pencil case in 300D RPET polyester. **Size** 20X10CM **Print technique** Screen printing*,T1,TD,TR



Clipa MO2887



A4 clipboard made of cardboard with paper cover and silver iron clip. Lightweight 125g design, ideal for everyday office or school use. **Size** 31.5X22X0.22CM **Print technique** Digital inlay*,L,S



Clerk MO2845



Calculator with 5" LCD writing tablet. Includes the stylus. **Size** 7.5X1.6X12.8CM **Print technique** Pad printing*,DL,D01



Sulimdot MO2857



Computer mouse mat for sublimation with polyester surface and rubber on the base to prevent slipping. Diameter 21cm. **Size** Ø21X0.2CM **Print technique** Sublimation*



Order MO2824



Silicone cable organiser with natural bamboo detail. Compact oval design keeps cables tidy and secure. **Size** 11X2X1.5CM **Print technique** Pad printing*,L,DL,D01



Scene MO2865



Rechargeable LED book light in ABS with flexible body and clip. Features 3 light settings, 300mAh battery. **Size** 8.3X4.6X1.8CM **Print technique** Pad printing*,DL,D01



Muro MO2851



Wall clock in PP with aluminium hands and silent movement. Requires 1 AA battery (not included). **Size** 30X3.8X30CM **Print technique** Pad printing*,DL,D01



Planit MO2886



Magnetic acrylic monthly planner in A4 size with 3 erasable magnetic markers (black, red and white). Includes screws for mounting. **Size** 30X20CM **Print technique** Pad printing*,PD,DL,D01



Curt MO2933



Bamboo twist snooze timer with countdown time display. Battery-powered. 2 x AAA batteries (not included). **Size** 69X69X67.5CM **Print technique** Pad printing*,L,DL,D01

Eating & Drinking





Enkel MO2792



Motivational sports water bottle in RPET with integrated straw, soft silicone mouth piece, one hand opening flip top lid, safety lock. With carrying strap in RPET satin. Capacity 700 ml. Leak free. **Size** Ø7.7X21.5CM **Print technique** Pad printing*,DL,D01,T1,TD,TR



Activate max MO2791



Motivational water bottle in RPET. Features a one-hand open flip-top lid with straw, safety lock, and handle. Leak-free. Capacity : 2000 ml **Size** Ø11X30CM **Print technique** Pad printing*,DL,D01



Toien klar MO2990



RPET bottle with 2 in 1 straw and sip lid and handle. Leak free. Capacity: 700 ml. **Size** Ø7.4X26.6CM **Print technique** Round screen printing*,RD,DLP



Utah remax MO2781



Drinking bottle in RPET. Leak-free. Capacity: 1000 ml. **Size** Ø7.5X27.8CM **Print technique** Round screen printing*,RD,P,L,DL,D01



New colour

Activate MO2489



Sports water bottle in RPET with integrated straw, soft silicone mouth piece, motivational time markings, one hand opening flip top lid, safety lock and carrying strap. Capacity 1L. **Size** Ø7X28CM **Print technique** Pad printing*,DL,D01,T1,TD,TR



New colour

Isforden mark MO2672



Sports water bottle in RPET, motivational time markings, one hand opening flip top lid, safety lock and carrying strap. Leak-free. Capacity: 1L. **Size** Ø7.5X28.5CM **Print technique** Pad printing*,DL,TD,TR





Moss re500 MO2803



Drinking bottle in RPET with carabiner. Capacity: 500 ml. **Size** Ø6.5X21CM **Print technique** Round screen printing*,RD,P



Moss re750 MO2804



Drinking bottle in RPET with carabiner. Capacity: 750 ml. **Size** Ø7.1X24.8CM **Print technique** Round screen printing*,RD,P



Dualuse MO2789



Refillable 2 in 1 bottle in Tritan and double wall tumbler part in recycled stainless steel (90 % recycled and 10% stainless steel). 2 lids in PP material. Capacity total 610 ml, tumbler 350 ml. **Size** 7.2X28.5CM **Print technique** Round screen printing*,P



Lett MO2944



Foldable silicone sports bottle with PP lid, handle, polyester strap, and transparent buckle to secure when folded. Leak-free. Capacity: 500 ml. **Size** Ø6.7X24CM **Print technique** Pad printing*,DL,D01,T1,TD,TR



Suma grip MO2775



Double wall insulated bottle in recycled stainless steel (90% recycled stainless and 10% stainless steel) with combination straw and sip lid with handle. Leak free. Capacity : 500 ml. **Size** Ø7.4X22CM **Print technique** Round screen printing*,RL,RD,L,PTS



Svalur MO2903



Single wall bottle made of 90 % recycled stainless steel and 10% stainless steel with rubber finish. Includes PP and SS lid with silicone handle. Capacity: 500 ml. **Size** Ø6.1X21.3CM **Print technique** Round screen printing*,RL,RD,L,P





Re-one moss MO2829



Single wall bottle (90% recycled stainless steel and 10% stainless steel) with a PP lid and carabiner. Capacity 1000 ml. As this is a single wall bottle, heat transfer can still occur. **Size** Ø8X26.4CM **Print technique** Pad printing*,RL,RD,RS,TS,L



New colour

Rebigo moss MO2404



Single wall recycled stainless steel bottle (90% recycled stainless steel and 10% stainless steel) with carabiner. Capacity: 750 ml. The carabiner is not for climbing (non-professional use). Sublimation print available on white item only. Leak free. As this is a single walled bottle, heat transfer can still occur. **Size** Ø6.5X25CM **Print technique** Pad printing*,RD,RL,RS,L,TS



New colour

Remid moss MO2403



Single layer bottle in recycled stainless steel (90% recycled stainless steel and 10% stainless steel) with carabiner. 500 ml. Sublimation print available on white item only. Leak free. As this is a single walled mug, heat transfer can still occur. **Size** Ø6.5X19CM **Print technique** Pad printing*,RD,RL,RS,L,TS



New colour

Athena mid MO2516



Single wall bottle in recycled stainless steel (90% recycled stainless steel and 10% stainless steel). Leak-free. Capacity 500 ml. As this is a single walled bottle, heat transfer can still occur. **Size** Ø7X16.5CM **Print technique** Round screen printing*,RD,RL,TS,L,P



New colour

Athena plus MO2517



Single wall bottle in recycled stainless steel (90% recycled stainless steel and 10% stainless steel). Leak-free. Capacity 750 ml. As this is a single walled bottle, heat transfer can still occur. **Size** Ø7X22CM **Print technique** Round Screen printing*,RD,RL,TS,L,P



New colour

Spot MO2500



Recycled stainless steel (90% recycled stainless steel and 10% stainless steel) single wall bottle with foldable mouth piece, straw and lid with carrying handle. Capacity: 500 ml. As this is a single walled bottle, heat transfer can still occur. **Size** Ø6.5X18.5CM **Print technique** Round screen printing*,RD,RL,DL,L,P,TS





Toien one MO2989



Single wall recycled stainless steel (90% recycled stainless and 10% stainless steel) bottle. Features 2-in-1 straw and sip PP lid with handle. Leak-free. Capacity: 650 ml. **Size** Ø7.4X26.6CM **Print technique** Round screen printing*,RL,RD,L,P



Toien two MO2988



Double wall insulated recycled stainless steel (90% recycled stainless and 10% stainless steel) bottle. Features 2-in-1 straw and sip PP lid with handle. Leak-free. Capacity: 500 ml. **Size** Ø7.4X26.6CM **Print technique** Round screen printing*,RL,RD,L,P



Bite MO2962



Foldable TPU water bottle with bite valve. Lightweight and portable design, ideal for outdoor use. Leak-free. Capacity 500 ml. **Size** 9.5X27CM **Print technique** Screen printing*



Spot fresh MO2938



Sports drinking bottle with convenient handgrip in solid PE plastic. Capacity: 500 ml. Leak free. **Size** Ø6.6X18.6CM **Print technique** Round screen printing*,DL,P



Fersk MO2880



Sports bottle with convenient handgrip in solid PE plastic. Capacity: 700 ml. Leak free. **Size** 7.8X7.4X23.2CM **Print technique** Round screen printing*,DL



New colour

Kolapsi MO2548



Collapsible silicone bottle with stainless steel lid and aluminium carabiner. The carabiner is not for climbing (non-professional use). Capacity: 500 ml. **Size** Ø6.5X21CM **Print technique** Pad printing*,L



Mugora MO2964



Tumbler in RPET with straw lid including PP straw. Capacity: 1200 ml. **Size** 14,2X25,5CM
Print technique Pad printing*



Mixie MO2821



Portable blender cup in PCTG with PP lid, extra drink lid and carry loop. Features 18000 rpm motor, 1200 mAh rechargeable battery, and Type-C to USB-A cable. Capacity: 600ml. **Size** Ø9X28CM(EXTRALID:Ø7.5X2.2CM) **Print technique** Round screen printing*,P



Brace+ MO2885



Double wall recycled stainless steel (90 % recycled stainless steel and 10% stainless steel) tumbler with PP lid. Capacity: 350 ml. Leak free. **Size** Ø8.8X15.1CM **Print technique** Round screen printing*,RL,RD,L,P



Boris MO2912



High borosilicate glass bottle with silicone pouch and PP lid with handle. Capacity: 600 ml **Size** Ø8.5X20.5CM **Print technique** Round screen printing*,P



Cozycup MO2922



Double wall recycled stainless steel (90% recycled stainless and 10% stainless steel) tumbler with PP 2-in-1 sip and straw lid. Leak-free and durable. Capacity: 350 ml. **Size** 16,1X11X14,5CM **Print technique** Round screen printing*,P



Goblet MO2773



PP tumbler with silicone sleeve and PP sliding lid. Capacity: 330 ml. As this is a single walled mug, heat transfer can still occur. **Size** 8.4X7.9X11.3CM **Print technique** Round screen printing*,P



Beaker MO2772



PP mug with recycled stainless steel base (90 % recycled stainless steel and 10% stainless steel) and PP sliding lid. Capacity: 300 ml. **Size** 11.2X10CM **Print technique** Round screen printing*,P



Cocoa MO2900



Double wall mug with 90 % recycled stainless steel and 10% stainless steel interior and recycled PP exterior. Includes transparent AS sliding lid. Capacity 400ml. **Size** 11.6X11.5CM **Print technique** Round screen printing*,P



Monday MO6256



Reusable mug in PP. Capacity: 300 ml. **Size** 10X8.5CM **Print technique** Pad printing*



Util MO2621



Double wall recycled stainless steel (90% recycled stainless and 10% stainless steel) mug. Capacity: 260 ml. **Size** 11.1X9.1CM **Print technique** Round screen printing*,RL,L,P



Miyerba MO2776



Double wall Yerba mate cup in recycled stainless steel (90% recycled stainless and 10% stainless steel). Includes stainless steel bombilla straw and cleaning brush. Capacity : 240 ml. **Size** Ø8X10.7CM **Print technique** Round screen printing*,RL,L,P





Mugiva MO2890



Stoneware ceramic mug with matt finish exterior and white inner and rim. Capacity 300ml. Suitable for engraving. Individual packing in white carton box. **Size** Ø8.2X9.6CM **Print technique** Laser engraving*



Silbase MO2958



Ceramic mug with white matt finish and silicone base for stability. Capacity 300ml. Individual packing in white carton box. **Size** Ø8.2X9.4CM **Print technique** Round screen printing*, PTC



Froti MO2871



Milk frother battery-powered. Excluding 2 x AA batteries. **Size** 3.5X2.2X19.8CM **Print technique** Pad printing*, DL, D01



Ensala MO2902



Two-tier round lunch box made of PP with side clip closure and handles. Includes inner lids in white. Capacity 250 ml top, 700 ml bottom. **Size** 16.5X14.5X11.3CM **Print technique** Pad printing*, S, DL



Gosnack MO2757



Double wall insulated lunch container made of 90 % recycled stainless steel and 10% stainless steel with PP lid. Capacity: 500 ml. **Size** Ø10X14CM **Print technique** Round screen printing*, RL, RD, L, P



Sarnie MO2941



PP lunch box, side buckles and an airtight lid. Capacity: 800 ml. **Size** 21.5X12X6.6CM **Print technique** Pad printing*, DL, D01, L



Hoagie MO2770



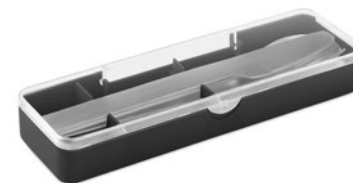
Lunch box made of PP with additional recycled stainless steel inner layer. Airtight AS lid that keeps food fresh and secure during transport. Capacity 750 ml without tray and 650 ml with tray. **Size** 21.6X12X6.5CM **Print technique** Pad printing*,DL,D01



Gobuddy MO2888



Recycled stainless steel (90 % recycled stainless steel and 10% stainless steel) lunch box with secure side buckles and round corners. Capacity: 750ml. **Size** 18X12.3X6CM **Print technique** Pad printing*,L,DL,D01



Mesteck MO2677



Stainless steel cutlery set with PP case. This set includes a fork, knife and spoon. **Size** 19.5X5.2X2CM **Print technique** Pad printing*,DL,D01,L



Dip MO2849



2-in-1 glass oil dispenser and sprayer with PP lid and PE straw. Capacity 450 ml. **Size** 10X7.9X18CM **Print technique** Round screen printing*,L,P



Both MO2771



Magnetic bamboo salt and pepper set with PP plug closure at the base. The two shakers connect magnetically. **Size** 10X5X7CM **Print technique** Pad printing*,L



Napoli MO2913



Round pizza cutter with bamboo handle and stainless steel blade. Features transparent white silicone protection ring. **Size** 8.5X7.7X1.2CM **Print technique** Pad printing*,L



Gala MO2349



Long adjustable kitchen apron in 240 gr/m² polycotton (35% cotton, 65% polyester) with two front pockets and adjustable strap with metal buckle. **Size** 75X90CM **Print technique** Screen printing*,T1,TD,TR,E



Kid chef MO2826



Kids chef's hat and apron set in RPET non-woven 80 gr/m². **Size** 42.5X57CM **Print technique** Screen printing*,T1,TD,TR



Stopy MO2946



Bottle stopper made of recycled ABS for sparkling wine bottles. Features a turning lock mechanism and leak-free design. **Size** Ø3.9X4CM **Print technique** Pad printing*



Bistro MO2928



Aluminium table lamp with 24 LEDs, 3 light modes and touch control. Features stepless dimming and 1200mAh rechargeable Li-Ion battery with 6hr use. **Size** 8X30.5CM **Print technique** Pad printing*,L,DL,D01



Lounge MO2950



Rechargeable RGB table lamp in iron with 39 LED lights and stepless dimming. With warm or colour changing light options. Built-in 2000mAh battery lasts up to 6 hours. **Size** Ø13X29.5CM **Print technique** Pad printing*,DL,D01,L



New colour

Hierluz MO2478



Iron table lamp with 12 LED lights, stepless dimming, 3 light modes and touch control. USB port and rechargeable Li-Ion 1200 mAh battery, 6hr working time after fully charged. Including charging cable. **Size** Ø8.9X21CM **Print technique** Pad printing*,DL,L,D01



Ledmemo MO2919

Light-up LED memo board with colour changing light and erasable white marker. Features acrylic board and aluminium base. Battery powered, requires 3 x AAA batteries (not included). **Size** 16.1X10X2.6CM **Print technique** Pad printing*,DL,D01

Bags & Travel



1. MO2985 / 2. MO2986 / 3. MO2829





New colour

Cottonel colour++ MO9846



Cotton shopping bag with long handles. 180 gr/m². This product is OEKO-TEX® STANDARD 100 certified. **Size** 38X42CM **Print technique** Screen printing*, T1, TR, E, TD



New colour

Cottonel colour + MO9268



Cotton shopping bag with long handles. 140 gr/m². This product is OEKO-TEX® STANDARD 100 certified. **Size** 38X42CM **Print technique** Screen printing*, T1, TR, E, TD



New colour

Rassa coloured MO6442



Canvas shopping bag with long handles. 270 gr/m². This tote is perfect for daily groceries or other shopping activities. It's available in various colours. Carry the bag over your shoulder when it's heavy and to keep your hands free. Carry weight limit: 7 kgs. This product is OEKO-TEX® STANDARD 100 certified. **Size** 38X9X42CM **Print technique** Screen printing*, T1, TD, TR, E



Zevra colour MO2868



Cotton shopping bag with long handles. 140 gr/m². **Size** 38X42CM **Print technique** Screen printing*, T1, TR, E, TD



Aurora MO2984



180 gr/m², cotton shopping bag with rainbow colour handles. Carry weight limit 2.5kgs. **Size** 38X42CM **Print technique** Screen printing*, T1, TR, TD, E



Puri MO2790



Cotton shopping bag with short handles and gusset. 220 gr/m². **Size** 38X15X35CM **Print technique** Screen printing*, T1, TD, TR, E



Osole++ colour MO2590



Shopping bag with long handles and gusset made of Fairtrade cotton. 180 gr/m². **Size** 38X12X42CM **Print technique** Screen printing*,T1,TR,TD



New colour

Osole+ colour MO2589



Fairtrade cotton shopping bag with long handles. 180 gr/m². **Size** 38X42CM **Print technique** Screen printing*,T1,TD,TR,E



Osole draw colour MO2591



Drawstring bag made of Fairtrade cotton. 180 gr/m². **Size** 37X41CM **Print technique** Screen printing*,T1,TR,TD



Daykit MO2920



Drawstring bag in 420D RPET polyester with vertical side zip pocket and RPET 210D lining. Features durable cords on both sides. Capacity 4.5L, max load 5 kg. **Size** 34X42CM **Print technique** Screen printing*,T1,TR,TD



Cordy g MO2875



Large shopping/beach bag in polyester corduroy with top zipper closure, open front pocket and inner pocket. 220 gr/m². **Size** 39X12X37CM **Print technique** Screen transfer*,TD,TR



Cordy b MO2874



Shopping bag in polyester corduroy with long handles. 220 gr/m². **Size** 38X42CM **Print technique** Screen transfer*,TD,TR



Cordy t MO2876

Cosmetic bag in polyester corduroy with polyester lining. 220 gr/m². **Size** 21.5X5X15CM **Print technique** Screen transfer*,TD,TR



New colour

Viveka colour MO2302

Recycled pre-consumer cotton shopping bag (70% recycled cotton and 30% RPET) with long handles. 140 gr/m². This item can shrink after printing. **Size** 38X42CM **Print technique** Screen printing*,T1,TR,E,TD



Baga MO2858

Shopping bag made of laminated jute and 280 gr/m² cotton canvas with cord handles. Includes large open front pocket. **Size** 34X15X44.5CM **Print technique** Screen printing*,T1,TD,TR



Makenke MO2805

Beach bag in 280 gr/m² cotton canvas and jute with cord handles. Features zipper closure, jute-covered bottom and 10 jute loops. **Size** 50X17.5X34CM **Print technique** Screen printing*,T1,TD,TR



New colour

Heaven stripe MO2126

Striped beach or shopping bag in cotton with cord handle. 220 gr/m². **Size** 55X15X39CM **Print technique** Screen printing*,T1,TD,TR



Limp MO2836

Shopping bag made of RPET mesh and 210D RPET with short handles. Includes large open front pocket. Capacity 20L, load up to 10 kg. **Size** 44.5X14X34CM **Print technique** Screen printing*,T1,TD,TR





Coldi MO2832



Cooler rucksack made of water-repellent 600D RPET with PE foam insulation and PEVA lining. Features moulded lid, padded mesh back, front zip pocket, and side sandwich mesh pockets. Capacity 20L. **Size** 33X20X46CM **Print technique** Screen printing*,T1,TD,TR



Mafrio MO2971



Cooler backpack in 600D RPET polyester with padded adjustable shoulder straps, PEVA lining, and 5mm PE foam. Includes front pocket and two side mesh pockets. Capacity: 9L. **Size** 27.5X18X39CM **Print technique** Screen printing*,T1,TD,TR



Mufrio MO2972



Cooler backpack in 600D RPET polyester with padded adjustable shoulder strap, 1 zippered side mesh pocket and 1 front pocket. PEVA lining with 13mm PE foam. Capacity 11L. **Size** 24.5X13.5X33.5CM **Print technique** Screen printing*,T1,TD,TR



Gelid MO2788



Cooler bag in 600D RPET polyester with PU coating. With 1 front pocket and 1 inner mesh pocket. Isolation PEVA lining with 6mm PE foam. Includes 2 handles and 1 adjustable shoulder strap. Capacity 18L. **Size** 32X19.5X29CM **Print technique** Screen printing*,T1,TD,TR



Drift MO2782



Cooler bag in PU with 100g RPET polyester lining. Including 1 front pocket, handle and shoulder strap. Isolation PE foam with PEVA lining. Capacity 5.5l. **Size** 25X18X15.5CM **Print technique** Screen printing*,T1,TD,TR



Wintry MO2810



Cooler lunch bag with internal temperature indicator made of 600D RPET with 3mm PE foam with aluminium foil lining. Buckle closure. Zippered main compartment. With side zippered pocket. Capacity: 10L. **Size** 18.5X12X26CM **Print technique** Screen printing*,T1,TD,TR



New colour

Night MO6997



Large drawstring bag in 300D RPET polyester with side zippered outer pocket. **Size** 40X48CM **Print technique** Screen printing*,T1,TD,TR,TS



Daffy rpet MO2809



Drawstring bag in RPET non-woven with polyester cord. 80 gr/m². **Size** 33.5X42CM **Print technique** Screen printing*,T1,TD,TR



Shoop kids MO2811



Kids drawstring bag in 190T RPET polyester with polyester cord. **Size** 32X27CM **Print technique** Screen printing*,T1,TD,TR,TS



Usee MO2814



Transparent drawstring bag in EVA and PVC. Polyester cords. **Size** 36X40CM **Print technique** Screen printing*



New colour

Kamet MO2552



Roll top backpack with hook and loop closure in 390 gr/m² recycled cotton (80%) and recycled polyester (20%). Zippered front pocket. **Size** 26X14X56CM **Print technique** Screen transfer*,S,TD,TR



Uniton MO2969



15-inch roll top laptop backpack made of 600D RPET polyester with 210D RPET padded lining. Features a zippered front pocket, elastic side pocket, and adjustable shoulder straps. **Size** 31X14X39CM **Print technique** Screen printing*,T1,TD,TR





New colour

Irea MO2170

15 inch rolltop laptop backpack in 600D polyester with padded back and base reinforcement. Zippered front pocket. 210D lining. **Size** 32X13X61CM **Print technique** Screen printing*,T1,TD,TR



New colour

Bangkok roll MO2643

Roll top 15 inch laptop backpack in PU coated 600D RPET polyester and RPET polyester lining. Meshed padded back with zippered pocket and trolley strap. Padded shoulder strap with mesh inside finishing. **Size** 30X25X57CM **Print technique** Screen printing*,T1,B,TD,TR



Carryconfi MO2970

Outdoor 50L backpack in 600D RPET with padded laptop compartment and several inner compartments, zip front pockets, mesh padded straps and back, hip belt, and elastic supports for accessories. **Size** 30X14X48CM **Print technique** Screen printing*,T1,TD,TR



Flysafe MO2840

Cabin-size carry-on extendable backpack made of 600D RPET polyester with 180o opening. Features a main compartment with two open sections, mesh division, padded 15" laptop pocket, and luggage strap. **Size** 25X20X40CM **Print technique** Screen printing*,T1,TD,TR



Flyhigh MO2784

Cabin-size extendable backpack in 600D RPET polyester with PU backing and 180o opening. Includes shoe division, padded 15" laptop pocket, mesh straps, luggage strap, and side buckles. **Size** 30X20X40CM **Print technique** Screen printing*,T1,TD,TR



Magnate MO2985

Backpack trolley in 290T RPET polyester with three front zip pockets, padded 15" laptop compartment, and zippered cooling section. Features padded back, straps, and rear zip strap compartment. **Size** 41X28X20CM **Print technique** Screen transfer*,S,TD,TR



Itfits MO2942



Soft duffel bag trolley in 600D RPET. Zippered front pocket. Two side slip pockets. Three inner pockets. Padded shoulder straps. 2 wheels and double tube frame. **Size** 72X36X38CM **Print technique** Screen transfer*, S,TD,TR



Nostalgic MO2987



PU sports bag, inner lined, main compartment and zipped pocket, sturdy handles, base inlay and studs. Capacity approx. 21.5 litres. **Size** 48X25X28CM **Print technique** Screen printing*



Confli MO2935



Sports backpack made of water-repellent 420D PU/nylon with mesh details. Includes a 1500ml EVA water container with PVC tube and lock. Lightweight, durable, and perfect for outdoor activities. **Size** 20X6X39CM **Print technique** Screen printing*,T,TD,TR



Steady MO2953



Sports running and hiking waist bag made of 420D RPET polyester with mesh back. Features two bottle compartments, central zip pocket, and adjustable strap. Lightweight and durable. **Size** 47X13CM **Print technique** Screen printing*,T,TD,TR



Hipla MO2835



Waist bag in 600D RPET polyester with zippered main compartment and hidden zippered back compartment. **Size** 24X12X6CM **Print technique** Screen transfer*,S,TD,TR



Moderate MO2945



Sports running waist bag made of 600D RPET polyester with PU backing. Features a main zippered compartment, side zip pocket, and adjustable elastic strap. Lightweight and durable. **Size** 24X9.5CM **Print technique** Screen printing*,T,TD,TR



Tremont MO2927

● 18 inch hard-shell trolley in ABS. 1 main compartment and inner compartment. Includes a security lock. Rides on 4 wheels. **Size** 33X21X52CM **Print technique** Pad printing*,L,DL,D01



New colour

Stor MO2341

● ● 14 inch underseat luggage trolley with 4 wheels in ABS. It has an inside zippered pocket. Including a combination lock and double tube frame. **Size** 40X20X30CM **Print technique** Digital label*,D01



New colour

Budapest MO9178

● 20 inch hard-shell trolley in ABS. 1 main compartment and inner compartment. Includes a security lock. Rides on 4 wheels. **Size** 35X22X53CM **Print technique** Laser engraving*,D01,DL



Wrap it MO2906

● ● ● Bendable travel pillow made of soft polyester and foam. Includes RPET drawcord pouch for easy storage. Comfortable and compact for travel. **Size** 88X11X3.5CM **Print technique** Screen printing*,T1,TD,TR



Soft nuit MO2907

● ● ● 2 in 1 travel pillow with attached eye mask. **Size** D1A14X10.5CM **Print technique** Screen printing*,T1,TD,TR



Exten MO2979

● EU 2-pole GaN wall charger with 65W quick charge, 1 USB-A and 2 Type-C ports. Supports Power Delivery technology. Ideal travel item. **Size** 9X4,4X3,1CM **Print technique** Pad printing*,DL



Muv usb ac30 pd MO2980

SKROSS® MUV USB – universal 2-pole travel adapter with USB-A and Type-C ports. Delivers 30W via Type-C and 18W via USB-A for fast, safe charging worldwide. Compact, powerful, and travel-ready. **Size** 41,2x34,8x17,1 **Print technique** Pad printing*,DL



Pro light usb ac30 pd MO2981

SKROSS® PRO Light USB 30W PD World – universal 3-pole grounded adapter with USB-A (20W) and Type-C (30W). Safe, powerful, and ideal for charging all devices across Europe and beyond. **Size** 41,2x34,8x17,1 **Print technique** Pad printing*,DL



Pro 3-pole MO2982

SKROSS® PRO – universal 3-pole travel adapter for Europe, USA/Japan, Australia, and China. Grounded for extra safety. **Size** 39,5x31,8x17 **Print technique** Pad printing*,DL



Allthere MO2859

Tech organizer pouch in 600D RPET polyester with PU coating. **Size** 11X2X20CM **Print technique** Screen printing*,T1,TD,TR



Rover MO2822

Zippered key case in 300D RPET with 210D RPET lining. Featuring 5 key holders. **Size** 6,5X2,5X10,5CM **Print technique** Screen printing*,T1,TD,TR



Mio MO2815

Bamboo luggage tag with stainless steel rope. **Size** 9X5X0,2CM **Print technique** Pad printing*,L



Shoetogo MO2977



Shoe bag in 600D RPET polyester with side handle and zipper. **Size** 36X16X16CM **Print technique** Screen printing*,T1,TD,TR

Umbrellas & Raingear



1. MO2167 / 2. MO2925 / 3. MO2875





Portland sin MO2844



19-inch 5-fold manual umbrella made of 190T pongee with matching pouch. It has a metal and fibreglass windproof frame, black rubberized handle with wrist strap, and compact 17 cm folded size. **Size** Ø90X17CM **Print technique** Screen printing*,T1,TD,TR



Amboli MO2926



23-inch windproof auto-open square umbrella in 190T pongee polyester. Features full fibreglass frame and ribs, rubber-finished ABS handle. **Size** Ø104X79.5CM **Print technique** Screen printing*,RL,RD,S,L,T1,TD,TR



Drykid MO2843



18 inch kids auto open umbrella. Metal shaft and ribs, 190T polyester. Handle, tips and top in PP. **Size** 46CM **Print technique** Screen printing*,T1,TD,TR



Agumbe MO2925



23-inch 3-fold reverse windproof umbrella made of 190T RPET pongee and matching pouch. Auto open and close, full black plating frame, fibreglass ribs, and a rubber-finished ABS handle. **Size** Ø107X62CM **Print technique** Screen printing*,T1,TD,TR



Hithere MO2901



2-piece gift set with 600 ml double wall recycled stainless steel bottle with PP lid, metal detail, and silicone handle, plus 21" foldable windproof pongee umbrella with ABS handle in gift box. **Size** 18X19X34CM **Print technique** Pad printing*,RL,RD,S,L,T1,TD,TR



Recreation & Kids



1. MO2816 / 2. MO2863 / 3. MO2973 / 4. MO2780 / 5. MO2761




SEAQUAL
INITIATIVE

Soblue MO2864



Sunglasses and frame made of SEAQUAL® PP with PC and AC lenses. UV400 protection. SEAQUAL INITIATIVE supports global ocean clean-ups. **Size** 14.1X13.8X4.6CM **Print technique** Pad printing*,DL,DOI


SEAQUAL
INITIATIVE

Sidney sea MO2863



Frisbee made from SEAQUAL® ocean PP material. Diameter 21 cm, thickness 1.2 mm. SEAQUAL INITIATIVE works with ocean clean-ups worldwide. **Size** DIA21CM **Print technique** Pad printing*,S,DL



Shade MO2881



Two-person beach tent made of 190T polyester. Includes 6 steel hooks and a matching carry bag. Lightweight and easy to set up. Designed for shade and outdoor comfort. **Size** 160 X 140 X 110 CM **Print technique** Screen printing*,T1,TD,TR



Rafia MO2833



Natural straw roll up beach mat with polyester carry strap. **Size** 180X60CM **Print technique** Screen transfer*,TD,TR



Hummum MO2954



Set of hammam beach towel with beach bag. 70% cotton and 30% polyester 180 gr/m². **Size** 50X14X38CM **Print technique** Screen printing*,T1,TD,TR,E



Woodfan MO2883



Wooden hand fan made of Schima Superba wood and polyester with 34 ribs. Elegant design. **Size** 23X42CM **Print technique** Pad printing*,L





Nosand MO2882



Lightweight beach mat in 210T polyester measuring 200x210cm. Includes 4 black hooks and a matching drawstring pouch for easy carrying. **Size** 200X210CM **Print technique** Screen printing*,T1,TD,TR



atoll 30 MO2760



Microfibre towel made of 90% polyester and 10% polyamide with elastic handle. Lightweight and quick drying. Size 30 cm x 50 cm. **Size** 30X50CM **Print technique** Screen printing*,T1,TD,E,TR



atoll 50 MO2761



Microfibre towel made of 90% polyester and 10% polyamide with elastic handle. Lightweight and quick drying. Size 50 cm x 100 cm. **Size** 50X100CM **Print technique** Screen printing*,T1,TD,E,TR



atoll 70 MO2762



Microfibre towel made of 90% polyester and 10% polyamide with elastic hanger loop. Lightweight and quick drying. Size 70 cm x 120 cm. **Size** 70X120CM **Print technique** Screen printing*,T1,TD,E,TR



atoll 100 MO2763



Microfibre towel made of 90% polyester and 10% polyamide with elastic hanger loop. Lightweight and quick drying. Size 100 cm x 150 cm. **Size** 100X150CM **Print technique** Screen printing*,T1,TD,E,TR



New colour

Easygo KC6382

Outdoor chair in 600D polyester clothing and iron frame. Nylon pouch included to store the chair. Max. weight 100 kg. **Size** 80X48X86CM **Print technique** Screen transfer*,TD,TR



Grab MO2973

Water rugby ball in neoprene with rubber inner part. Includes inflation needle. **Size** DIA15X25CM **Print technique** Screen printing*,T1,TD,TR



Grasp MO2975

Neoprene beach ball with rubber inside. Including inflation needle. Inflated: Ø16cm **Size** DIA16CM **Print technique** Screen printing*,T1,TD,TR



Snatch MO2976

Neoprene ball catch game. Includes 1 ball, a pair of ball catchers in RPET mesh drawcord bag. **Size** DIA18X0.6CM **Print technique** Screen printing*,T1,TD,TR



Iwon MO2638

Beach set with 2 plywood rackets featuring a chess and ludo game boards. Includes 1 TPR ball, dice and checkers. Packed in RPET mesh zippered carrier bag. **Size** 38 X 23.5 X 0.5CM **Print technique** Laser engraving*,S,T1,TD,TR



Bolin MO2842

Wooden soccer game. Includes players, ball, shooter and scoring sticks. **Size** 24X15X1.8CM **Print technique** Pad printing*,L



New colour

Yogi MO9463



Yoga exercise mat made of 0.4 EVA material. Including a mesh/polyester pouch. **Size** 180X60X0.4CM **Print technique** Screen printing*,T1,TD,TR



Glaci MO2780



Mini handheld fan in ABS with screen display and 5 speed settings. Includes replaceable 2600mAh rechargeable lithium battery. **Size** 13.5X4X4CM **Print technique** Pad printing*,DL



Ibera MO2779



Portable foldable fan in ABS with 3 speed settings. Can be used as handheld or desk fan. Includes 1 replaceable and rechargeable 14500 Lithium battery 500 mAh. **Size** 8X17.2X2.7CM **Print technique** Pad printing*,DL,D01



Funball MO2931



Rubber bouncing ball. **Size** DIA6CM **Print technique** Pad printing*



Cheer MO2807



Body paint stick in national flag colours with wax paint in PP case and PS lid. **Size** 3.6X6X1.5CM **Print technique** Pad printing*,DL,D01



Funsketch MO2914



Children's drawing set with 50 recycled paper sheets and 12 wooden colouring pencils. With kraft paper cover. **Size** 13.7X20X1.7CM **Print technique** Pad printing*,S



Circo MO2929



Wooden pencil with eraser in animal shape. **Size** 18.8CM **Print technique** Pad printing*,L



New colour

Carrydraw MO9887



Non woven drawstring bag with 5 markers and design to colour in. 80 gr/m². Standard imprint. **Size** 28X35CM **Print technique** Screen printing*,T1,TD,TR



Cray MO2787



Non woven pencil case including 4 crayons. **Size** 23X13CM **Print technique** Screen printing*,T1,TD,TR



Thezoo MO2968



Painting set of 4 wooden hangers in animal design with jute cords and 5 crayons, all packed in non-woven drawcord bag. Ideal for creative play and decoration. **Size** 11X15CM **Print technique** Screen printing*,T1,TD,TR



Snuggle MO2949



Polyester teddy bear plush holding a red heart, Embroidered eyes, nose and mouth. **Size** 23CM **Print technique** Screen transfer*,TD,TR



Cuddle MO2802



Polyester teddy bear plush holding a red heart, Embroidered eyes, nose and mouth. **Size** 13X16CM **Print technique** Screen transfer*,TD,TR



Johnny t MO2594



Teddy bear plush with t-shirt. Sublimation print available on white item only. **Size** 13X15CM **Print technique** Sublimation*,T1,TD,TR



Johnny MO7375



Teddy bear plush wearing a hooded sweater. Sublimation print available on white item only. **Size** 13X15CM **Print technique** Sublimation*,T1,TD,TR



Teddchef MO2837



Polyester teddy bear plush dressed as a chef with white hat and apron. Embroidered eyes, nose and mouth. **Size** 17X16CM **Print technique** Sublimation*,T1,TD,TR



Doc MO2838



Polyester teddy bear plush dressed as a doctor with white printed T-shirt. Embroidered eyes, nose and mouth. **Size** 13X16CM **Print technique** Sublimation*,T1,TD,TR



Nurse MO2839



Polyester teddy bear plush dressed as a nurse with white printed T-shirt. Embroidered eyes, nose and mouth. **Size** 17X16CM **Print technique** Sublimation*,T1,TD,TR



Jackie MO2745



Teddy bear plush with t-shirt. Sublimation print available on white item only. **Size** 23CM **Print technique** Sublimation*,S,T1,TD,TR



Artiloe MO2852

Mini artificial plant in PP. Type: aloe ferox mill shape. **Size** 5.7X5.7X11.2CM **Print technique** Pad printing*,DL,D01



Artieche MO2853

Mini artificial plant in PP. Type: echeveria shape. **Size** 5.7X5.7X6.7CM **Print technique** Pad printing*,DL,D01



Artigrap MO2854

Mini artificial plant in PP. Type: graptopetalum paraguayense shape. **Size** 5.7X5.7X7.8CM **Print technique** Pad printing*,DL,D01



Opencook MO2796

Stainless steel BBQ spatula with beechwood handle and integrated bottle opener. Includes PU rope hanger for easy storage. **Size** 36.9X7.2X1.6CM **Print technique** Pad printing*,L



Forus MO2934

Picnic cooler bag in 600D RPET polyester for 2 people with zippered front pocket including stainless steel cutlery, 2 plates in PS, 2 glasses in PS and 2 cotton napkins. Capacity: 18l **Size** 42X22X27CM **Print technique** Screen printing*,T1,TD,TR



Costa MO2978

Foldable RPET 150 gr/m² (68% recycled polyester/32% regular polyester) polar fleece picnic blanket with water resistant coated PEVA reverse side. Front flap with zippered pocket and handle. **Size** 200X200CM **Print technique** Screen transfer*,S,TD,TR



Asleep MO2937

Outdoor sleeping bag in 170T polyester with PP cotton inner. Includes matching drawcord bag for easy carrying. Lightweight, durable, and ideal for camping or outdoor adventures. **Size** 75X185CM **Print technique** Screen transfer*,TD,TR



Keensharp MO2785

ABS pocket-sized knife sharpener. **Size** 8.2X2.7X0.8CM **Print technique** Screen transfer*,TD,TR



Mutool MO2862

Stainless steel multi tool cutlery. Tools includes spoon, fork, adjustable wrench, bottle opener, hex key, serrated knife, opener and positioning wrench. **Size** 17.5X3.4CM **Print technique** Laser engraving*



Nole one MO2951

Telescopic walking pole with EVA handle, wrist strap, rubber tip, and mud basket. Adjustable from 105 to 120 cm. Packed in RPET drawstring pouch. Lightweight and durable design. **Size** 57.5X5CM **Print technique** Laser engraving*,STI,TD,TR



Chaco MO2963

ABS outdoor compass with carabiner. The carabiner is not for climbing (non-professional use). **Size** 6.8X3X1CM **Print technique** Pad printing*,DL,D01

Daily Living



1. MO6752 / 2. MO6789 / 3. MO2948 / 4. MO9931





Island 70 MO2766



Bath towel made of 100% cotton, 380 gr/m² fabric with cotton hanger loop. Soft and absorbent design. Size 70 cm x 140 cm. **Size** 70X140CM **Print technique** Screen printing*,T1,TR,E



Island 100 MO2767



Bath towel made of 100% cotton, 380 gr/m² fabric with cotton hanger loop. Soft and absorbent design. Size 100 cm x 150 cm. **Size** 100X150CM **Print technique** Screen printing*,T1,TR,E



Island 30 MO2764



Guest towel made of 100% cotton, 380 gr/m² fabric with cotton hanger loop. Soft and absorbent design. Size 30 cm x 50 cm. **Size** 30X50CM **Print technique** Screen printing*,T1,TR,E



Island 50 MO2765



Hand towel made of 100% cotton, 380 gr/m² fabric with cotton hanger loop. Soft and absorbent design. Size 50 cm x 100 cm. **Size** 50X100CM **Print technique** Screen printing*,T1,TR,E



Salve MO2870



Vegan lip cream 12 g in tube. SPF10. Flavour: Vanilla. **Size** 3X7X2CM **Print technique** Pad printing*,DL,RS,PD



Mist MO2904



Body mist spray in 30ml PET bottle with pump and PP lid. A rich fragrance mix of plum and cassis that opens into jasmine and Brazilian orchid, settling into warm vanilla woods and soft musk. **Size** DIA2.8X9.8CM **Print technique** Pad printing*,RS,DL



Sweet MO2905



Vegan lip balm in heart shaped PP box. SPF10. Flavour: Vanilla. **Size** 3.7X3.2X3CM **Print technique** Pad printing*,PD,DL,DOI



Alove MO2911



Aloe Vera gel in 50ml refillable PET bottle with PP flip cap and aluminium carabiner. Transparent green gel, ideal for travel use. **Size** 11.5X4.6X2.5CM **Print technique** Pad printing*,RS,DL



Labbra MO2915



Vegan lip balm 4.5 g with vanilla flavour and SPF10 protection in PP case. Dermatologically tested. **Size** 7X1.5X1.5CM **Print technique** Pad printing*,DL,RS,PD



Doppkit MO2860



Toiletry bag made of 600D RPET polyester with PU coating and 210D RPET lining. Features zippered front pocket and handle. **Size** 21X13X9CM **Print technique** Screen printing*,T1,TD,TR



Vanit MO2948



Toiletry bag in 600D RPET with PU coating, RPET mesh and 210D RPET lining. Features front zippered main compartment pocket, inner mesh and open pockets. **Size** 22X4X13CM **Print technique** Screen printing*,T1,TD,TR



Vanity MO2961



Cosmetic bag made of 600D RPET polyester with top zip closure and brown PU detail. **Size** 20X5.5X12CM **Print technique** Screen printing*,T1,TD,TR





Gloss IT2698



Lip Balm **Size** Ø4x1CM **Print technique** Pad printing*,DL,RS,PD



Stabil MO2873



Set of 2 sports knee supports made of fabric laminated with chloroprene rubber and terry cloth backing. Soft, flexible, and supportive for active use. **Size** 32X2CM **Print technique** Screen transfer*,TD,TR



Thaima MO2965



Massage gun with 2 speed level in ABS. Rechargeable 1200mAh battery. Comes with an RPET pouch. **Size** 10X5X11.2CM **Print technique** Pad printing*,S,T,TD,TR,DL



Caretwo MO2818



First aid kit in hard PU case. Includes 2 gloves, 1 blanket, 1 tape, 2 bandages, 1 scissors, 4 swabs, 10 plasters and 6 cleaning wipes. Not available for sale outside the EU. **Size** 16X11.5X6.7CM **Print technique** Screen printing*



Careone MO2819



Compact first aid kit in RPET pouch with aluminium carabiner. Includes 4 alcohol swabs, 3 plasters, 2 bandages, 2 gauze pads, 1 tape, and 1 scissors. Not available for sale outside the EU. **Size** 10.5X8X2.7CM **Print technique** Screen printing*,T,TD,TR



New colour

Evan KC6949



Compact plastic container including 5 pcs adhesive bandages. Not available for sale in Switzerland. **Size** 10X4X0.9CM **Print technique** Pad printing*,DL,D01,PD



Itsme MO2841



Compact mirror in foldable PU case. **Size** 7X11X0.8CM **Print technique** Pad printing*,B

Premiums & Tools



1. MO2717 / 2. MO2991 / 3. MO2773





Lume MO2786



Recycled aluminium rechargeable torch 110 lumen with 3 light settings. 1 replaceable and rechargeable 14500 lithium battery 400 mAh. **Size** 2.1X2.1X10CM **Print technique** Pad printing*, L



Lumezo MO2991



Recycled aluminium rechargeable torch with multiple light settings and zoom in/out function. Includes one replaceable 14500 lithium battery. Powerful and durable for everyday use. **Size** 2.5X2.5X10CM **Print technique** Pad printing*, L



Taier MO2932



Magnetic LED work light torch in ABS with clip and side COB light. Features magnetic base for hands-free use. Requires 3 AAA batteries (not included). **Size** 16.6X2.3X2.3CM **Print technique** Pad printing*



Rotate MO2834



Aluminium rechargeable 1200mAh work light with 270° rotatable body. Features bright inspection light, side COB light with 2 settings, hanging hook and magnetic base. Charging cable included. **Size** DIA4.8X14.7CM **Print technique** Pad printing*, L, DL, D01



Jak MO2831



Portable foldable stool made of PP plastic with anti-slip surface. Supports up to 120kg load. **Size** 38.5X30.5X39CM **Print technique** Screen printing*, DL, D01



Multihammer MO2717



14-in-1 stainless steel multi tool hammer. With nail puller, hex wrench, serrated knife, steel file, variety of screwdrivers, regular pliers, needle-nose pliers, bottle opener, knife, wire cutter. **Size** 160X75X25MM **Print technique** Pad printing*, L, DL, D01



Claw it MO2936

Claw hammer and screwdriver in carbon steel. Includes 4 bits screwdrivers integrated in handle. **Size** 2X7.3X20.5CM **Print technique** Pad printing*,L



Bend me MO2872

Bendable screwdriver set with ABS handle and 12 iron bits including Phillips, flat head, hex and torx types. **Size** 16.7X3.3CM **Print technique** Pad printing*,D01



Meas3 MO2908

Measuring tape in recycled ABS and steel tape. 3M. **Size** 6X6.5X3.3CM **Print technique** Pad printing*,DL,D01



Meas5 MO2909

Measuring tape in recycled ABS and steel tape. 5M. **Size** 6.5X6.7X3CM **Print technique** Pad printing*,DL,D01



Blade MO2768

Retractable knife with ABS casing and carbon steel blade. Compact 15cm design for precise cutting tasks. **Size** 15X1.5X0.8CM **Print technique** Pad printing*,DL



Blade + MO2769

Retractable knife with ABS casing and carbon steel blade. Includes two extra replacement blades for extended use. **Size** 16.5X2.8X1.5CM **Print technique** Pad printing*,DL



Carfresh MO2960

Car vent air freshener with aluminium cover and ABS clip. Includes RPET felt insert for aroma liquid (not included). **Size** 5.8X4.9X2.8CM **Print technique** Pad printing*,L



Organizer cool MO2956

Foldable car organizer in 600D RPET polyester with 3 compartments of which one cooler compartment. **Size** 26 X 33 X 60CM **Print technique** Screen transfer*,S,TD,TR



Grin MO2884

Round reflective keyring in PVC. For promotional use. **Size** DIA5CM **Print technique** Pad printing*



Open goal MO2795

Football-shaped bottle opener keyring made of zinc alloy with iron ring. **Size** DIA3.7X0.2CM **Print technique** Pad printing*,L



Mytruck MO2820

Zinc alloy bottle opener in truck shape. **Size** 8.9X3.1X0.2CM **Print technique** Pad printing*,L,DL,D01



Mycar MO2827

Zinc alloy bottle opener in car shape. **Size** 9X3.1X0.2CM **Print technique** Pad printing*,L



Myhouse MO2828

Zinc alloy bottle opener in house shape. **Size** 7.9X5.1X0.2CM **Print technique** Pad printing*,L



Kepad MO2794

Recycled aluminium paddle-shaped keyring. **Size** 3.8X5.4X0.17CM **Print technique** Pad printing*,L



Clave MO2793

Bottle opener token keyring made of recycled aluminium with iron ring. **Size** 6.1X3.1X0.22CM **Print technique** Pad printing*,L



New colour

Ovikey MO6923

Recycled aluminium key ring bottle opener in shiny finish. **Size** 7.5X2.5X1.3CM **Print technique** Pad printing*,DL,D01,L,PD



Magrec 75 MO2846

Rectangular magnet with PVC lamination. **Size** 5X7.5X0.15CM **Print technique** Pad printing*,PD,DL,D01



Magrec 100 MO2847

Rectangular magnet with PVC lamination. **Size** 7.5X10X0.15CM **Print technique** Pad printing*,PD,DL,D01



Maground MO2848

Round magnet with PVC lamination. **Size** DIA5.8X0.15CM **Print technique** Pad printing*,PD,DL,D01



Magme MO2955

Rectangular acrylic photo holder with magnet. Fits photo inlay size 8.8 x 5.6 cm. Ideal as souvenir or for family memories on the fridge. **Size** 9.4X6.2CM **Print technique** Digital inlay*,PD



Proplate MO2959

Sublimation aluminium promotion plate with natural bamboo base. Ideal for custom branding or display use. **Size** 12X15X0.1CM **Print technique** Pad printing*,TS,PD,L



Withme MO2910

Classic acrylic keyring for full colour paper inlay. Inner photo size: 4.1 x 2.7cm **Size** 4.2X6X0.6CM **Print technique** Digital inlay*

Apparel & Accessories



1. MO2879 / 2. MO2861 / 3. MO6657





Flat peak MO2850



Newsboy flat cap in 235 gr/m² twill cotton with metal buckle closure. **Size** 23X28CM
Print technique Screen printing*,T1,TD,E,TR



Blind peak MO2966



Newsboy flat cap mélange in 335 gr/m² polyester with metal buckle closure. **Size** 32X38.5CM
Print technique Screen printing*,T1,TD,E,TR



Field MO2867



Military cap in 260gr/m² brushed cotton with polyester sweat band and adjustable hook and loop closure. **Size** 58CM
Print technique Screen printing*,T1,TD,TR



Wale MO2879



5 panel baseball cap in polyester corduroy with adjustable metal buckle closure. 220 gr/m². **Size** 58CM
Print technique Screen transfer*,TD,TR,E



Dock MO2923



Docker cap made of 100% heavy brushed cotton, 260gr/m², mesh and with metal buckle **Size** 58CM
Print technique Screen printing*,T1,TD,TR



Buzz kids MO2346



5 panel kids baseball cap in cotton twill 180 gr/m² with adjustable hook and loop closure for a comfortable fit. **Size** 54CM
Print technique Screen printing*,T1,TD,E,TR



Bead MO2866



7 panel flat visor cap in cotton twill 235 gr/m² with polyester mesh backside and plastic closure. **Size** 22X16X11.5CM **Print technique** Screen printing*,E



Blist MO2986



5 panel trucker cap with front panel and visor in 250 gr/m² cotton, back mesh in polyester, hook and loop closure. **Size** 21X16X11.5CM **Print technique** Screen printing*,E,T1,TD,TR



New colour

Capo MO2543



5 panel polyester performance cap with adjustable hook and loop closure and laser perforated holes with 2 stitched eyelets in matching colour. Item is quick dry, sweat and water repellent. 130 gr/m² **Size** 21X16X11CM **Print technique** Screen transfer*,TD,TR



Shield MO2878



Sports cooling beanie made of 100% polyester. Lightweight and breathable design keeps you cool during activity. **Size** 28X16CM **Print technique** Screen printing*,E,T1,TD,TR



Scoop MO2869



Bucket hat in 100% polyester corduroy. 220 gr/m² **Size** 58CM **Print technique** Screen transfer*,TD,TR,E



Palmar MO2877



Waterproof UPF50+ foldable fisherman hat made of nylon. 105 gr/m². **Size** 58CM **Print technique** Screen printing*,E,TR,T1,TD



Lanin MO2952



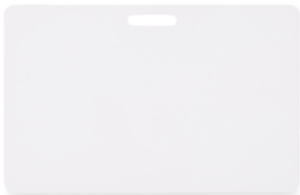
Water repellent fisherman hat made of polyester, includes self material pouch with ABS carabiner. 64 gr/m². **Size** 58CM **Print technique** Screen printing*,T1,TD,TR



Boowie MO2367



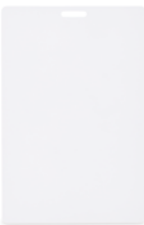
Paper straw hat with black polyester band. For unprinted orders the band will be supplied unattached to the items. **Size** Ø27X12CM **Print technique** Screen printing*,T1,TD,TR



Badsmall MO2856



Lanyard badge 54 x 86mm **Size** 85.5X54X0.76MM **Print technique** Pad printing*,PD,DL



Badlarge MO2974



Lanyard badge 120 x 80mm **Size** 120X80X0.76MM **Print technique** Pad printing*,PD,DL



Tosee MO2825



Reflective RPET polyester lanyard with 2.5 cm strap, metal hook, detachable PP buckle and safety breakaway. For promotional use only. **Size** 50X2.5CM **Print technique** Pad printing*,S,T1,TD,TR



Best MO2817



Wooden medal with cotton strap and wheat straw/PP buckle. **Size** DIA7X0.4CM **Print technique** Pad printing*,PD,DL





Borea MO2808



Rainbow multicolour sunglasses with PC frame with UV400 protection. **Size** 14.2X4.6X14CM **Print technique** Pad printing*,D01



Crete MO2992



Festival sunglasses with mirrored lenses and matt rubberized frame. UV400 protection. **Size** 14.1X4.7X14.8CM **Print technique** Pad printing*,DL,D01



New colour

California touch MO9617



Vintage sunglasses with bamboo arms and PC frame with coloured mirrored lenses. UV400 protection. Bamboo is a natural product, there may be slight variations in colour and size per item, which can affect the final decoration outcome. **Size** 14X4.5X14CM **Print technique** Pad printing*,L



Flash MO2816



Sports sunglasses with mirrored lenses and colour frame. UV400 protection. **Size** 14.7X5.8X12.8CM **Print technique** Pad printing*,DL,D01



New colour

Shine MO2544



Sports sunglasses with mirrored lenses and black frame. UV400 protection. **Size** 14X5.5X12CM **Print technique** Pad printing*,DL,D01



Clear MO2813



RPET cleaning cloth with self material pouch with PP plastic hanging hook. **Size** 15X18CM **Print technique** Screen printing*,T1,TD,TR,TS



Evaslip 36/37 MO2892



Full EVA slippers. Size 36-37. **Size** 25.3CM **Print technique** Pad printing*



Evaslip 38/39 MO2893



Full EVA slippers. Size 38-39. **Size** 26.6CM **Print technique** Pad printing*



Evaslip 40/41 MO2894



Full EVA slippers. Size 40-41. **Size** 28CM **Print technique** Pad printing*



Evaslip 42/43 MO2939



Full EVA slippers. Size 42-43. **Size** 29.3CM **Print technique** Screen printing*,T1,TD,B



Evaslip 44/45 MO2940



Full EVA slippers. Size 44-45. **Size** 30.6CM **Print technique** Screen printing*,T1,TD,B



Evaslide 36/37 MO2895



Unisex full EVA sliders. Size 36-37. **Size** 25.4CM **Print technique** Screen printing*,T1,TD,B



Evaslide 38/39 MO2896



Unisex full EVA sliders. Size 38-39. **Size** 26.7CM **Print technique** Screen printing*,T1,TD,B



Evaslide 40/41 MO2897



Unisex full EVA sliders. Size 40-41. **Size** 28CM **Print technique** Screen printing*,T1,TD,B



Evaslide 42/43 MO2898



Unisex full EVA sliders. Size 42-43. **Size** 29.4CM **Print technique** Screen printing*,T1,TD,B



Evaslide 44/45 MO2899



Unisex full EVA sliders. Size 44-45. **Size** 30.7CM **Print technique** Screen printing*,T1,TD,B



Honolulu L MO2587



Beach slippers in polyethylene sole with pvc strap. **Size** L **Print technique** Pad printing*



Honolulu M MO2588



Beach slippers in polyethylene sole with pvc strap. **Size** M **Print technique** Pad printing*



SOL'S®
the fair spirit

Textile Collection





SOL'S EXPLORER S04461

Eco-friendly T-shirt. Jersey 150.60% recycled cotton - 40% recycled polyester. **Size** XS / S / M / L / XL / XXL / 3XL **Print technique** Screen printing*,TDT,TR,TT,E



SOL'S TITAN S04728

Round neck T-shirt. Jersey 150. 100% semi-combed Ringspun cotton. **Size** XS / S / M / L / XL / XXL / 3XL / 4XL / 5XL **Print technique** Screen printing*,TDT,TR,TT,E



SOL'S REGENT V WOMEN S04766

V-neck T-shirt. Jersey 150. 100% semi-combed Ringspun cotton. **Size** XS / S / M / L / XL / XXL / 3XL **Print technique** Screen printing*,TDT,TR,TT,E



SOL'S SHIELD S04758

Windbreaker. 190T polyester. 100% recycled polyester - water-repellent **Size** XS / S / M / L / XL / XXL **Print technique** Screen printing*,TDT,TR,TT



SOL'S REGENT V S04765

V-neck T-shirt. Jersey 150. 100% semi-combed Ringspun cotton. **Size** XS / S / M / L / XL / XXL / 3XL **Print technique** Screen printing*,TDT,TR,TT,E



SOL'S VORTEX S04787

Performance T-shirt. Ripstop interlock 100. Ripstop-effect knit - 100% breathable recycled polyester. **Size** XS / S / M / L / XL / XXL **Print technique** Screen printing*,TDT,TR,TT



SOL'S VORTEX WOMEN S04788

Performance T-shirt. Ripstop interlock 100. Ripstop-effect knit - 100% breathable recycled polyester. **Size** XS / S / M / L / XL / XXL **Print technique** Screen printing*,TDT,TR,TT



SKATE S01171

Unisex lined windbreaker. 100% polyamide. 80gsm **Size** XS / S / M / L / XL / XXL / 3XL **Print technique** Screen printing*,TDT,TR,TT,E



SOL'S NITRO S04759

Unisex full-zip jacket. Microfleece 300. 100% recycled polyester. **Size** XS / S / M / L / XL / XXL / 3XL / 4XL / 5XL **Print technique** Digital transfer*,E,TT



LEGACY S03996

Unisex eco-friendly T-shirt. Jersey 220. 50% recycled cotton - 50% cotton. **Size** XS / S / M / L / XL / XXL / 3XL **Print technique** Screen printing*,TDT,TR,TT,E

yourChoice





Crossbody phone holders
Delivery time from 3 weeks.

Mix and play with colours! 15 standard colours or choose your PMS. 100 MOQ 100 MOQ



ML1079
Crossbody cord phone holder with optional carabiner.

ML1058
Crossbody, trendy 2-tone cord phone holder made of polyester. Also available in RPET ML1060.



ML1059
Crossbody, trendy 2-tone cord phone holder made of polyester. Also available in RPET ML1061.

ML1090
Crossbody contrast knot colour phone cord lanyard.

Wrist phone straps Delivery time from 3 weeks.

Mix and play with colours! 15 standard colours or choose your PMS. 100 MOQ 100 MOQ



ML1063
Sublimated phone holder wrist strap.

ML1095
Cord key tag & phone holder with your design label.



MC1007
Charging only.
MC2007
Charging & Data.



ML1091
Crossbody 2-tone knot colour phone cord lanyard.

ML1093
2-in-1 crossbody 2-tone phone cord lanyard & wrist strap.



ML1094
3-tone crossbody phone cord with two carabiners.

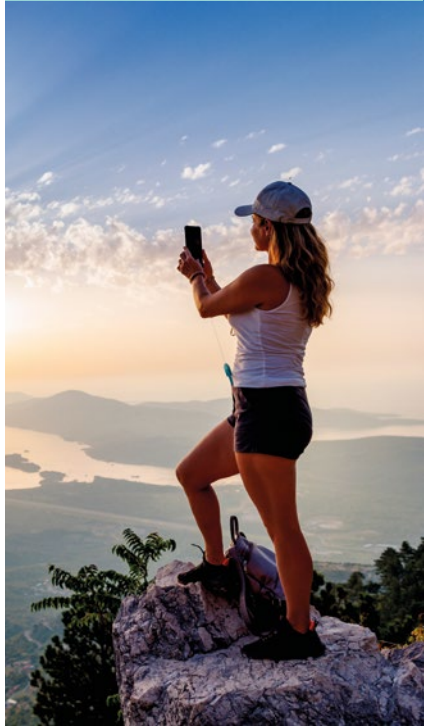


yourChoice

Anti-lost phone short straps

Anti-lost phone short straps for outdoor and safety use with your full colour doming design.

Delivery time from 4 weeks.



○ ● ● ● ● 5 standard colours or choose your PMS.



ML1088
Robust anti-drop & anti-theft badge reel phone holder.



ML1089
Robust anti-drop & anti-theft badge reel phone holder with strap.



yourChoice

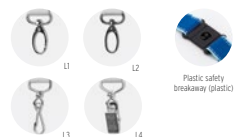
Full colour lanyards

Sublimation lanyards for unique designs with photographic images.

Delivery time from 2 weeks.



Create the lanyard of your choice with below options:



Size: 54x86 mm.
MLID01 PVC.
MLID05 Paper.

Size: 86x54mm.
MLID02 PVC.
MLID06 Paper.



Size: 100x70mm.
MLID03 PVC.
MLID07 Paper.

Size: 120x80mm.
MLID04 PVC.
MLID08 Paper.



ML1104
Fine Polyester.
rPET: ML1303

ML1204
Fine Polyester.
rPET: ML1304

ML5104
Fine Polyester,
made in EU.
rPET: ML5303

ML5204
Fine Polyester,
made in EU.
rPET: ML5304

yourChoice



Casing colour: 10 solid colours
Full colour



ML1164
Sublimated polyester
lanyard with retractable
ABS badge reel.
rPET: ML1363

ML1165
Sublimated polyester
lanyard with metal crimp
and a retractable ABS badge reel.
rPET: ML1365

15 standard colours or choose your PMS.



ML1601
Single colour metal badge
reel cord lanyard.

ML1603
Contrast knot colour metal
badge reel cord lanyard.

ML1606
2-tone knot colour
adjustable metal badge
reel cord lanyard.



yourChoice

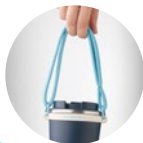
Custom drinkware
accessories

100
MOQ

100
MOQ

Crafted for style and convenience,
these carriers are designed to
perfectly fit your favorite drinkware.
Delivery time from 3 weeks.

● ● ● ● ● ● ● ● ● ● ● ● ● ● ● 15 standard colours or choose your PMS.



MLBH01
Tripple cord bottle carrier with logo label.



MLBH02
2-tone cord bottle carrier with logo label.



MLBH03
Cord bottle carrier with logo label.



MLBH11
Sublimated strap with
mineral water bottle
holder.



MLBH07
Sublimated crossbody
bottle and mineral water
bottle holder.



MLBH05
Crossbody 2-tone bottle
carrier with logo label.



MLBH10
Sublimated bottle carrier.



MLBH04
Sublimated mineral water
carrier with carabiner.



MB2015
Sublimated neoprene tumbler carrier.



MLBH08
Sublimated cross bottle
holder.



MLBH09
Detachable sublimated
cross bottle holder with
carabiner.



MLBH16
Sublimated drinkware
holder lanyard.

yourChoice

NFC
keyrings

NFC keyrings can be used for a wide range of promotional activities, from directing users to websites and social media pages to launching apps or even enabling loyalty programs.

Delivery time from 4 weeks.



yourChoice

Customised
design patches

Perfect for customising clothing, bags and headwear. Choose for iron-on, sew-on, hook & loop or adhesive backings.

Delivery time from 3 weeks.



MK5005
Custom PVC rubber NFC keyring with a single-sided logo design. Also available without NFC chip: MK1001.

MK5009
Custom shape wooden NFC keyring. Engraved or UV printed. Also available without NFC chip: MK6001.



MK5008
Round shape iron, domed NFC keyring. Also available without NFC chip: MK2036.



MK5007
Soft PVC full colour NFC keyring in your own shape. Also available without NFC chip: MK2035.



MK5004
Custom shape pre-programmed NFC keyring with doming. Size: within 40mm.

Merrow borders: are most popular and are best suited for basic shapes like circles and rectangles.



MPAT04
Full colour printed design.



MPAT03
Woven design.



MPAT02
Embroidered design.



Laser cut: choose from our laser-cut styles for more complex shapes with finer details.



MPAT14
Full colour printed design.



MPAT13
Woven design.



MPAT12
Embroidered design.



Fully customised waterproof bags

Delivery time from 4 weeks.



150
MOQ



Optional shoulder strap



MB8001

Durable PVC dry bag
MB8001 1.5L / MB8002 3.5L /
MB8003 5.8L / MB8004 10L



MB8007

RPET ripstop dry bag
MB8007 1.5L / MB8008 5L /
MB8009 10L



2L



MB8006

2L RPET ripstop window dry bag



2L



MB8010

2L RPET window dry bag



yourChoice



50 50000 PMS

MT4015
Cotton with sublimated polyester border.
50x100cm / 70x140cm / 100x150cm /
100x180cm. 350 and 400gsm.

Delivery time: from 6 weeks.



100 50000 PMS

MT4016
Cotton with jacquard woven polyester border.
50x100cm / 70x140cm / 100x150cm / 100x180cm.
350 and 400gsm.

Delivery time: from 6 weeks.



100 50000 PMS

MT4005
100% cotton relief woven beach towel.
50x100cm / 70x140cm / 100x150cm /
100x180cm. 350 and 400gsm.

Delivery time: from 6 weeks.



50 50000

MT4014
Full colour hammam towel in 280gsm
polycotton. 90x180cm.

Delivery time: from 4 weeks.



100 50000 PMS

MT4009
320gsm Relief woven hammam
& terry beach towel (100% cotton).
100x180cm / 100 x 150cm.

Delivery time: from 6 weeks.



100 50000

MT4109
150gsm hammam towel. 100x180cm.

Delivery time: from 6 weeks.

yourChoice

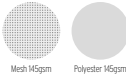
Sports & Team wear

Create your own design and personalise it for each player. Also available with long sleeves and with matching shorts.

Delivery time from 5 weeks.



Choose your fabric
Interlock polyester
Mesh polyester



SG1034



SG1004
Raglan crew neck jersey.
Check SG1004 for larger
quantities and lower costs.

SG1034
Crew neck jersey. Check SG1034 for
larger quantities and lower costs.

SG1035
V-neck jersey

yourChoice

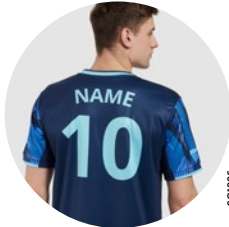
Premier sportswear
is made of high quality
fabrics, sublimated using
high end printing machines,
reproducing the most
vivid colours.

10 Delivery time from 5 weeks.
M00



SG1085

Streetwear



SG1006

Optional:
Individual names



SG1307
Premier blunt V-neck jersey
150gsm interlock polyester.
Also available in mesh fabric
and RPET.

SG1006
Premier crew neck jersey 150gsm
polyester. Also available in mesh
fabric and RPET.

SG1082
Premier Retro jersey with
overlapped collar 165gsm.

Unisex

yourChoice

Personalised apparel

An exciting collection of sublimated garments alongside matching accessories.

Athletic sweat bands & wrist bands

Delivery time from 04 weeks.

Standard colours or choose your PMS.



Cotton



ML3902
Single colour polyester moisture-wicking wrist sweatbands.



ML3903
Multicolour polyester moisture-wicking wrist sweatbands.



MH3902
Single colour polyester moisture-wicking sweat headband.

MH3903
Multicolour polyester moisture-wicking sweat headband.

Polyester



ML3802
Single colour soft & breathable cotton wrist sweatbands.

ML3803
Multicolour soft & breathable cotton wrist sweatbands.

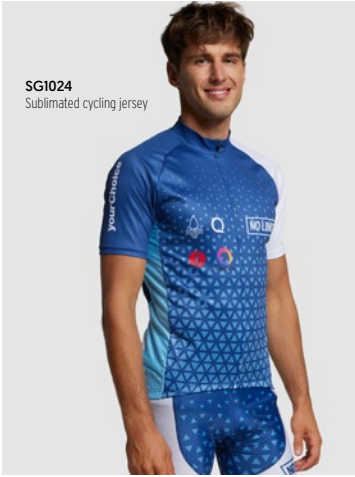


MH3802
Single colour soft & breathable cotton sweat headband.



MH3803
Multicolour soft & breathable cotton sweat headband.

SG1024
Sublimated cycling jersey



SG1021
Sublimated slim fit polo 145g mesh



yourChoice



SG1081
Premier baseball streetwear jersey 190gsm/Unisex.



SG1077
Sublimation unisex baseball jersey 220gsm.

SG1904
Rugby jersey with O-neck 260gsm.



SG1078
Sublimated crop tops for concerts & sports events.



SG2051
Sublimated relay shorts with pockets 230gsm.



MORE THAN GIFTS

THE ANNUAL CATALOGUE **2026**

Be Unique

Be Unique

